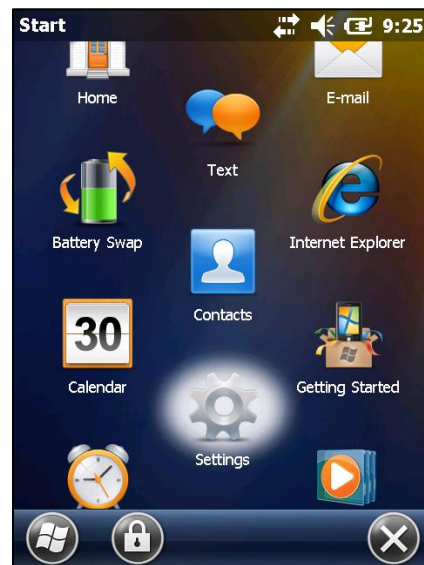
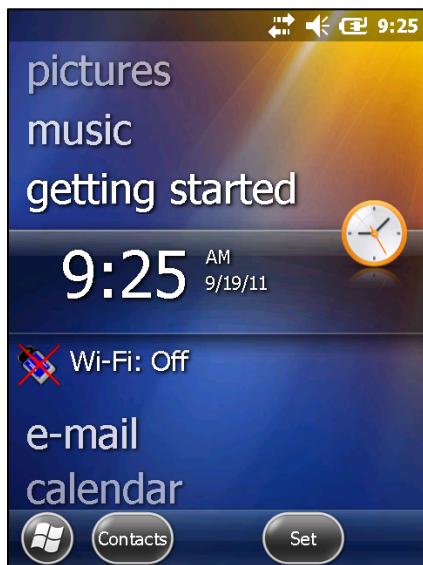


Optowand+ Bluetooth Setup

If using a MC9090, see the official Landis&Gyr Optowand+ Setup guide at: <http://tinyurl.com/L-GOptowandSetup>

The following documentation outlines the process for pairing the Bluetooth Optowand+ with Motorola devices including the MC9590, MC55 (MC5590), and the MC55A. MAS must be installed before the Optowand+ can be successfully paired with a mobile device.

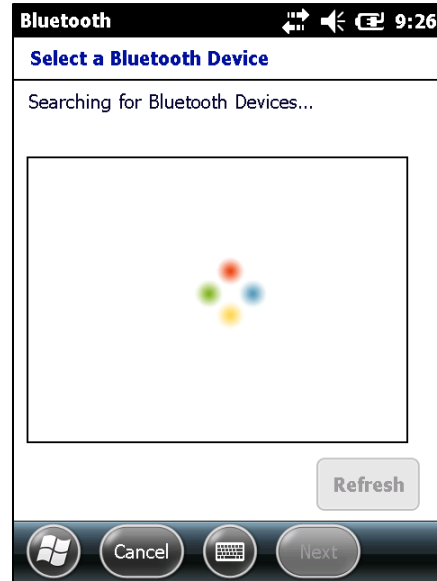
Select the Windows icon in the lower left corner to access the programs menu. Select **Settings** from the programs menu.



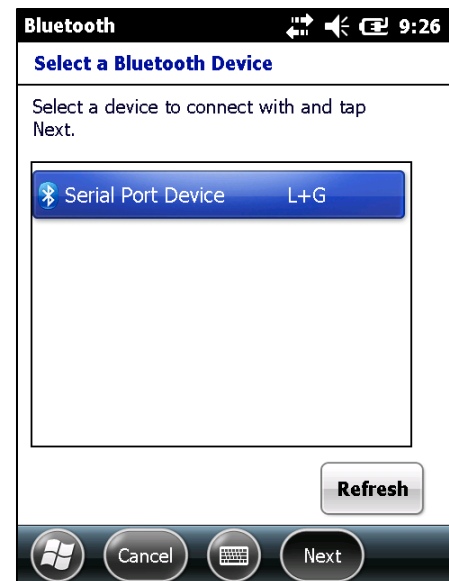
Within Settings, select **Connections**. Next, select **Bluetooth**.



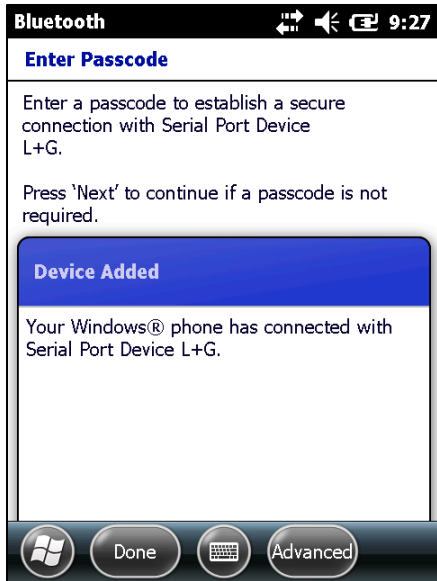
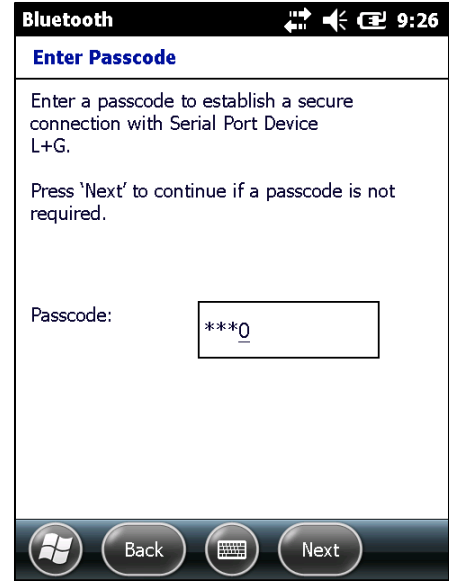
With batteries inserted into the Optowand+, press the WAKE UP button on the Optowand+. On the mobile device, press the **Add** button within the lower right corner to discover available Bluetooth devices.



The device will list the available Bluetooth devices. Select "Serial Port Device L+G" from the list and press **Next**.

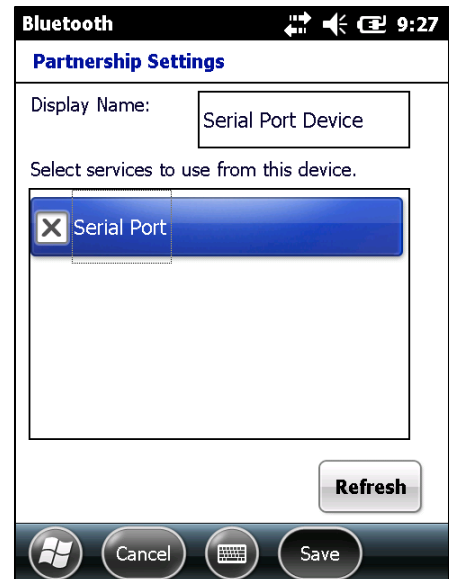


When prompted enter the password **0000** Please note, the password will attempt to mask itself as the password is entered, replacing the “0” with an “*” – this is normal behavior.



Once added, your device will give you a “Device Added” connection message. Next, access the advanced options by selecting the **Advanced** button in the lower right corner.

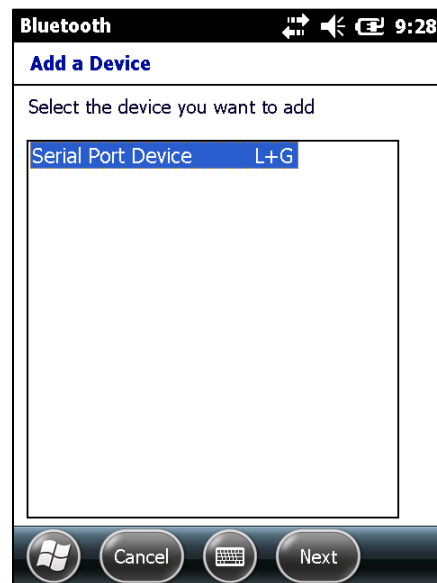
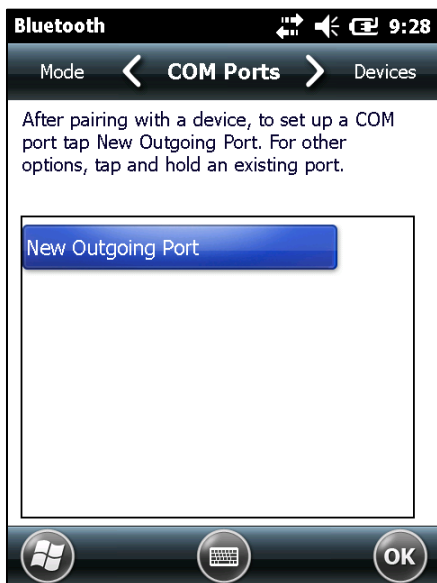
Within the advanced Partnership Settings menu, check the box which says Serial Port and then press the Save button in the lower right corner.



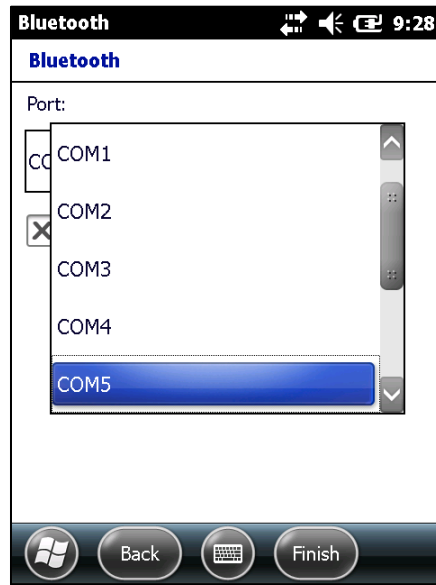
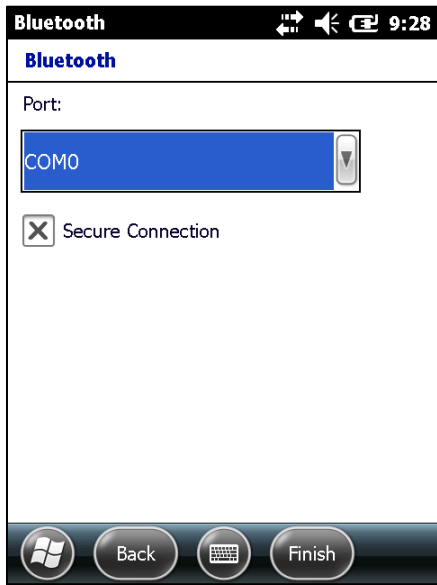
Next, the Bluetooth menu will display the added devices. Do not attempt to connect at this time. Instead, select the Com Ports Option in the upper left corner.



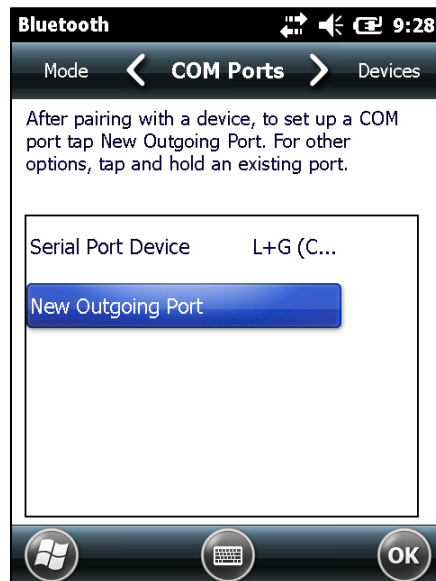
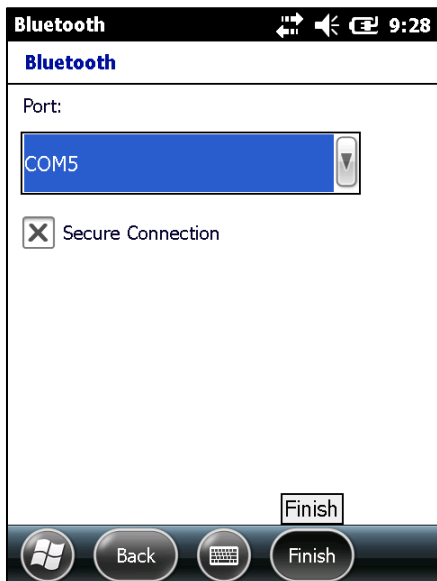
Within the COM Ports menu, tap the New Outgoing Port option. With Serial Port Device L+G highlighted, select Next.



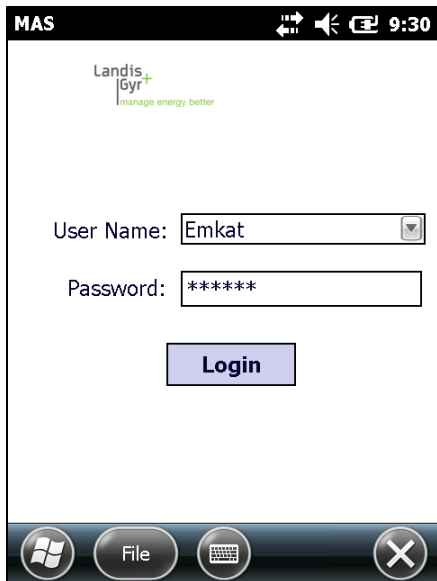
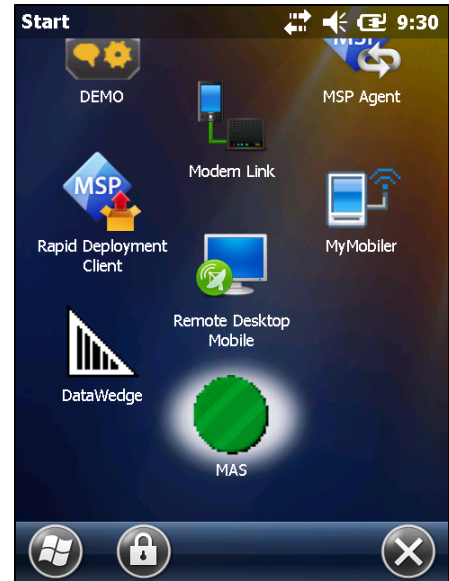
Using the dropdown menu, set the Port to **COM5**.



Press **Finish** to save this change. At the COM Ports menu press **OK**.

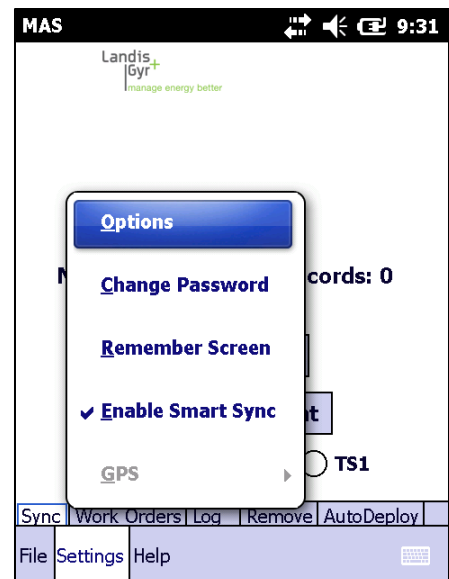


Lastly, tap on the Windows Icon to access the programs menu. Locate MAS in this list and tap on the icon to launch the application (this assumes MAS has been loaded on the device, if MAS has not been loaded on your device; load the appropriate version of MAS).

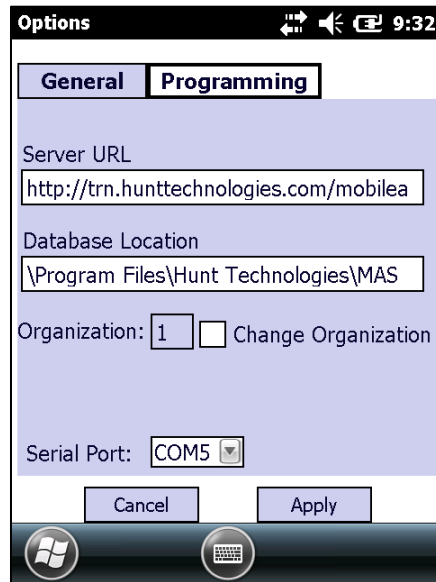
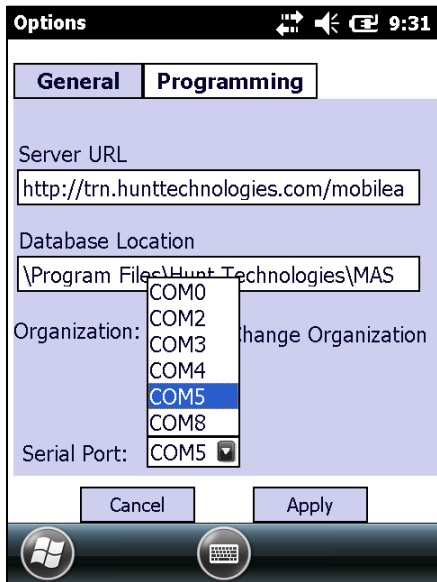


Log into MAS (if this is the first time accessing MAS, you may need to setup your server information in addition to the user information).

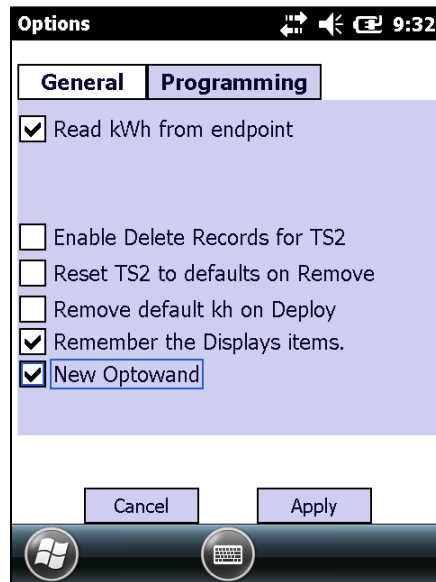
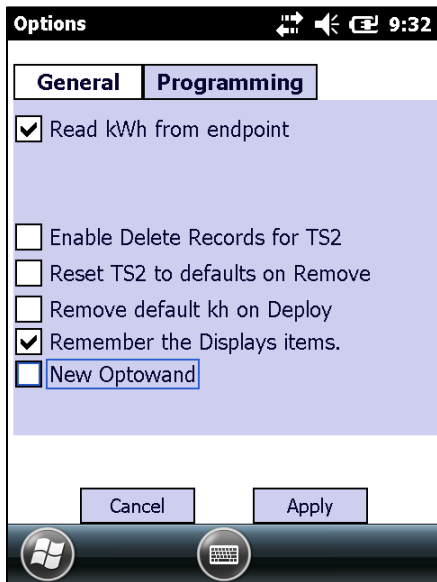
Within MAS, access the application settings. Select **Settings**, **Options**.



Within the General tab, use the dropdown menu to change the Serial Port option to **COM5**.



Next, select the Programming tab. Within the Programming tab, check the **New Optowand** option and press the **Apply** button to save these options.



The Optowand setup should now be complete. Select Detect Endpoint to use the Optowand. When a connection is established, you will notice a green connection indicator in the lower right corner.

